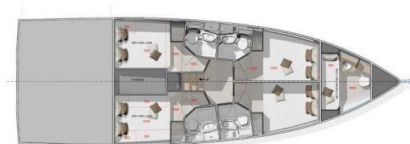


SEA LODGE

Sea Lodge I (2024)

Motor yacht Sea Lodge Sea Lodge I, built in **2024** is anchored in the **Sukosan, D-Marin Dalmacija Marina, Zadar region, Croatia**. It has **4 + 1 cabins**, can accommodate **8 + 1 people** and has **4 + 1 toilets**. Bed linen and kitchen equipment are included in the price.



YACHT SPECIFICATIONS

Yacht Base

**Sukosan, D-Marin Dalmacija Marina,
Croatia**

Yacht ID

9611

Brands

Custom Made

Yacht name

Sea Lodge I

Production year

2024

Length

46 ft

Cabins

4 + 1

Berths

8 + 1

WC

4 + 1

Engine

2 x 13 HP

Fuel tank

200 l



WEBSITE

www.plujeme.cz



PHONE

+420 720 755 085



MOBILE

+420 777 170 276



E-MAIL

info@plujeme.cz



PLUJEME RÁDI S.R.O.

Dlouhá 730/35, 11000 Praha 1 – Staré Město, Czech Republic

STANDARD YACHT EQUIPMENT

Deck	Anchor, Bilge pump – Mechanic, Boat hook, Cockpit/stern, outside shower, Dinghy, Electric anchor windlass, Fenders, Foredeck sunbathing area, Gangway, Grill/Barbecue/Plancha, Mooring ropes , Spare anchor (Reserve, Auxiliary anchor), Water hose
Entertainment	Radio
Galley	Gas bottles, Gas cookers, Ice maker, Oven, Refrigerator, Sink
Interior	Dining table, Electric fans in cabins, Electric toilet, Sofa
Navigation	Autopilot, Binoculars, Compass, Divider, nautic chart, GPS chart plotter, Hand bearing compass, Navigation (Nautical) charts and nautical guide , Navigation set
Safety	Fire extinguisher , First aid kit , Flashlight, Fog horn, Life buoy + Flashing light, Life jackets, Repair kit, VHF radio
Yacht electrics	220V socket, Bilge pump – Electric, Generator, Inverter, Pump, Service batteries, Solar panels, USB sockets



WEBSITE

www.plujeme.cz



PHONE

+420 720 755 085



MOBILE

+420 777 170 276



E-MAIL

info@plujeme.cz



PLUJEME RÁDI S.R.O.

Dlouhá 730/35, 11000 Praha 1 – Staré Město, Czech Republic

SERVICES

SELECTED SERVICES	OBLIGATORY	PAYMENT TYPE	PRICE
Transit log (Payable at the base) Season: 2024 - Angelina Yachtcharter. includes final cleaning, gas, bedlinen (1 set/person), Wi-Fi 70GB/week, package for toilets and kitchen, check in and out services	Yes	per booking	325,00 €
WiFi GRATIS ON BOAT (Payable now) Season: 2024 - Angelina Yachtcharter. GRATIS	Yes	per booking	0,00 €
Basic pack (Payable at the base) Season: 2024 - Angelina Yachtcharter. includes transit log, bath towels (2 sets per cabin - do not include skipper cabin)	Yes	per booking	410,00 €
Comfort Pack (Payable at the base) Season: 2024 - Angelina Yachtcharter. includes transit log, bath towels (2 sets per cabin - do not include skipper cabin), outboard engine (2,3/5,0 HP) and 1 SUP	Yes	per booking	580,00 €
Deposit insurance (Payable at the base) Season: 2024 - Angelina Yachtcharter. + refundable deposit 400,00 EUR	Yes	per booking	400,00 €
Early boarding/check-in (Payable at the base) Season: 2024 - Angelina Yachtcharter. boarding between 13:00 - 14:00h	Yes	per booking	250,00 €
Extra cleaning (Payable at the base) Season: 2024 - Angelina Yachtcharter. penalty fee for boat in dirty condition (garbage, dirty dishes, ect..)	Yes	per booking	120,00 €
Pet on board (Payable at the base) Season: 2024 - Angelina Yachtcharter. maximum 2 pets allowed	Yes	per booking	200,00 €



WEBSITE
www.plujeme.cz



PHONE
+420 720 755 085



MOBILE
+420 777 170 276



E-MAIL
info@plujeme.cz



PLUJEME RÁDI S.R.O.
Dlouhá 730/35, 11000 Praha 1 - Staré Město, Czech Republic

ADDITIONAL EXTRAS

EXTRA	OBLIGATORY	PAYMENT TYPE	PRICE
Beach towel (Payable at the base) Season: 2024 - Angelina Yachtcharter. Payable at the base	Yes	per piece	12,00 €
e-SUP (Payable at the base) Season: 2024 - Angelina Yachtcharter. SipaBoards - Allrounder; + additional deposit 1500 EUR, order in advance due to limited quantity of equipment - Payable at the base	Yes	per week	250,00 €
eFoil (Payable at the base) Season: 2024 - Angelina Yachtcharter. + 3000,00 EUR refundable deposit, order in advance due to limited quantity of equipment - Payable at the base	Yes	per week	1.200,00 €
Extra bedlinen (Payable at the base) Season: 2024 - Angelina Yachtcharter. Payable at the base	Yes	per set	10,00 €
Kayak (Payable at the base) Season: 2024 - Angelina Yachtcharter. *additional deposit 250 EUR, order in advance due to limited quantity of equipment - Payable at the base	Yes	per week	120,00 €
Railing net (Safety net) (Payable at the base) Season: 2024 - Angelina Yachtcharter. order in advance due to limited quantity of equipment - Payable at the base	Yes	per booking	100,00 €
Seabob (Payable at the base) Season: 2024 - Angelina Yachtcharter. additional deposit 1500 EUR, order in advance due to limited quantity of equipment - Payable at the base	Yes	per week	990,00 €
Stand up paddle (SUP) (Payable at the base) Season: 2024 - Angelina Yachtcharter. *additional deposit 250 EUR, order in advance due to limited quantity of equipment - Payable at the base	Yes	per week	80,00 €
Towels (Payable at the base) Season: 2024 - Angelina Yachtcharter. Payable at the base	Yes	per set	12,00 €



WEBSITE
www.plujeme.cz



PHONE
+420 720 755 085



MOBILE
+420 777 170 276



E-MAIL
info@plujeme.cz



PLUJEME RÁDI S.R.O.
Dlouhá 730/35, 11000 Praha 1 – Staré Město, Czech Republic

PRICE AND AVAILABILITY

21.09. - 28.09.2024

3.575 € 6.500 €

29.09. - 31.12.2024

NOT AVAILABLE



WEBSITE

www.plujeme.cz



E-MAIL

info@plujeme.cz



PHONE

+420 720 755 085



MOBILE

+420 777 170 276



PLUJEME RÁDI S.R.O.

Dlouhá 730/35, 11000 Praha 1 – Staré Město, Czech Republic