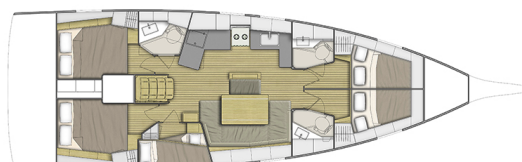


OCEANIS 46.1

Blue sky (2024)

Sailing yacht Oceanis 46.1 Blue sky, built in 2024 is anchored in the Dubrovnik, Komolac, ACI Marina Dubrovnik, Dubrovnik region, Croatia. It has 5 cabins, can accommodate 10 + 2 people and has 3 toilets. Bed linen and kitchen equipment are included in the price.



YACHT SPECIFICATIONS

Yacht Base

**Dubrovnik, Komolac, ACI Marina
Dubrovnik, Croatia**

Yacht ID

7741

Brands

Beneteau

Yacht name

Blue sky

Production year

2024

Length

48 ft

Cabins

5

Berths

10 + 2

Max Persons

12

WC

3

Engine

1 x 57 HP

Fuel tank

200 l



WEBSITE

www.plujeme.cz



PHONE

+420 720 755 085



MOBILE

+420 777 170 276



E-MAIL

info@plujeme.cz



PLUJEME RÁDI S.R.O.

Dlouhá 730/35, 11000 Praha 1 – Staré Město, Czech Republic

STANDARD YACHT EQUIPMENT

Comfort	Bed linen, Cockpit cushions, Mosquito nets, Towels
Deck	Anchor, Bathing platform, Bilge pump - Mechanic, Bimini top, Boat hook, Bosun's chair (Safe seat) (boatswain's chair), Cockpit table, Cockpit/stern, outside shower, Dinghy, Electric anchor windlass, Fenders, Gangway, Sprayhood
Entertainment	FUSION sound system, Indoor speakers, Outdoor speakers, Radio with USB
Galley	Gas bottles, Hot water, Kitchen utensils (Galley equipment, cutlery), Oven, Refrigerator, Sink, Stove, Water pump
Navigation	Autopilot, Binoculars, Compass, GPS chart plotter, Log/speed instrument, Navigation (Nautical) charts and nautical guide , Pilot book, Wind instrument/Anemometer
Safety	Black Water Tank, Buoyant smoke signal, Distress signals, Fire axe, Fire extinguisher , First aid kit , Fog horn, Life belts (Safety harness), Life jackets, VHF radio
Yacht electrics	Battery charger , Bilge pump - Electric, Service batteries, Shore connection 220 V, Solar panels



WEBSITE

www.plujeme.cz



PHONE

+420 720 755 085



MOBILE

+420 777 170 276



E-MAIL

info@plujeme.cz



PLUJEME RÁDI S.R.O.

Dlouhá 730/35, 11000 Praha 1 – Staré Město, Czech Republic

SERVICES

SELECTED SERVICES	OBLIGATORY	PAYMENT TYPE	PRICE
Charter pack (Payable at the base) Season: 2025. Includes: bed linen, towels, kitchen utensils, 3 GB WiFi, snorkeling set, diver's inspection, end cleaning	Yes	per booking	363,00 €
APA (Advance Provisioning Allowance) (Payable at the base) Season: 2025. Obligatory with Hostess	No	per week	3.000,00 €
Damage waiver (Payable now) Season: 2025. + 100 EUR refundable	No	per booking	390,00 €
Hostess (Payable now) Season: 2025. Preparation of 2 meals daily; + obligatory APA 3000,00eur	No	per week + food	1.837,00 €
One way fee (Payable now) Season: 2025. Only on request; ST-DU or vice versa; One way fee includes 1 day mooring fee in Dubrovnik & transfer of boat; Disembarkation on Friday at 15:00h	No	one-way	0,00 €
Permit for Montenegro (Payable at the base) Season: 2025. on request	No	per booking	0,00 €
Pet on board (Payable at the base) Season: 2025.	No	per booking	150,00 €
Skipper (Payable now) Season: 2025. + cabin	No	per week + food	1.750,00 €
Tourist tax (Payable now) Season: 2025. cash or card	No	per guest/night	1,33 €
Transfer (Payable at the base) Season: 2025. Transfer APT Dubrovnik -ACI(8pax)	No	one-way	75,00 €
WI-FI Internet connection on boat (Payable at the base) Season: 2025. 40GB	No	per booking	30,00 €



WEBSITE
www.plujeme.cz



PHONE
+420 720 755 085



MOBILE
+420 777 170 276



E-MAIL
info@plujeme.cz



PLUJEME RÁDI S.R.O.
Dlouhá 730/35, 11000 Praha 1 – Staré Město, Czech Republic

ADDITIONAL EXTRAS

EXTRA	OBLIGATORY	PAYMENT TYPE	PRICE
Beach towel (Payable at the base) Season: 2025. Payable at the base	No	per piece	9,00 €
Extra towels (Payable at the base) Season: 2025. small towel (70x50) + medium towel - Payable at the base	No	per set	7,00 €
Gennaker (Payable at the base) Season: 2025. on request - Payable at the base	No	per week	200,00 €
Outboard engine (Payable at the base) Season: 2025. Payable at the base	No	per week	100,00 €
Railing net (Safety net) (Payable at the base) Season: 2025. Payable at the base	No	per booking	100,00 €
Snorkeling equipment (Payable at the base) Season: 2025. Payable at the base	No	per set	12,00 €
Stand up paddle (SUP) (Payable at the base) Season: 2025. Payable at the base	No	per week	120,00 €
Water toys (Payable at the base) Season: 2025. On request - Payable at the base	No	per booking	0,00 €



WEBSITE
www.plujeme.cz



PHONE
+420 720 755 085



MOBILE
+420 777 170 276



E-MAIL
info@plujeme.cz



PLUJEME RÁDI S.R.O.
Dlouhá 730/35, 11000 Praha 1 – Staré Město, Czech Republic

PRICE AND AVAILABILITY

01.01. - 04.04.2025 NOT AVAILABLE	05.04. - 12.04.2025 2.385 € 3.180 €	12.04. - 19.04.2025 2.385 € 3.180 €	19.04. - 26.04.2025 2.385 € 3.180 €
26.04. - 03.05.2025 2.385 € 3.180 €	03.05. - 10.05.2025 2.385 € 3.180 €	10.05. - 17.05.2025 2.385 € 3.180 €	17.05. - 24.05.2025 3.224 € 4.030 €
24.05. - 31.05.2025 NOT AVAILABLE	31.05. - 07.06.2025 4.165 € 4.900 €	07.06. - 14.06.2025 NOT AVAILABLE	14.06. - 21.06.2025 4.956 € 5.830 €
21.06. - 28.06.2025 4.956 € 5.830 €	28.06. - 05.07.2025 4.956 € 5.830 €	05.07. - 12.07.2025 5.913 € 6.957 €	12.07. - 19.07.2025 5.913 € 6.957 €
19.07. - 26.07.2025 5.913 € 6.957 €	26.07. - 02.08.2025 5.913 € 6.957 €		



WEBSITE
www.plujeme.cz



E-MAIL
info@plujeme.cz



PHONE
+420 720 755 085



MOBILE
+420 777 170 276



PLUJEME RÁDI S.R.O.
Dlouhá 730/35, 11000 Praha 1 – Staré Město, Czech Republic

PRICE AND AVAILABILITY

02.08. - 09.08.2025 NOT AVAILABLE	09.08. - 16.08.2025 5.913 € 6.957 €	16.08. - 23.08.2025 4.956 € 5.830 €	23.08. - 30.08.2025 4.956 € 5.830 €
30.08. - 06.09.2025 NOT AVAILABLE	06.09. - 13.09.2025 NOT AVAILABLE	13.09. - 20.09.2025 NOT AVAILABLE	20.09. - 27.09.2025 3.610 € 3.800 €
27.09. - 04.10.2025 NOT AVAILABLE	04.10. - 11.10.2025 NOT AVAILABLE	11.10. - 18.10.2025 3.325 € 3.500 €	18.10. - 25.10.2025 3.325 € 3.500 €
26.10. - 31.12.2025 NOT AVAILABLE			



WEBSITE

www.plujeme.cz



E-MAIL

info@plujeme.cz



PHONE

+420 720 755 085



MOBILE

+420 777 170 276



PLUJEME RÁDI S.R.O.

Dlouhá 730/35, 11000 Praha 1 – Staré Město, Czech Republic