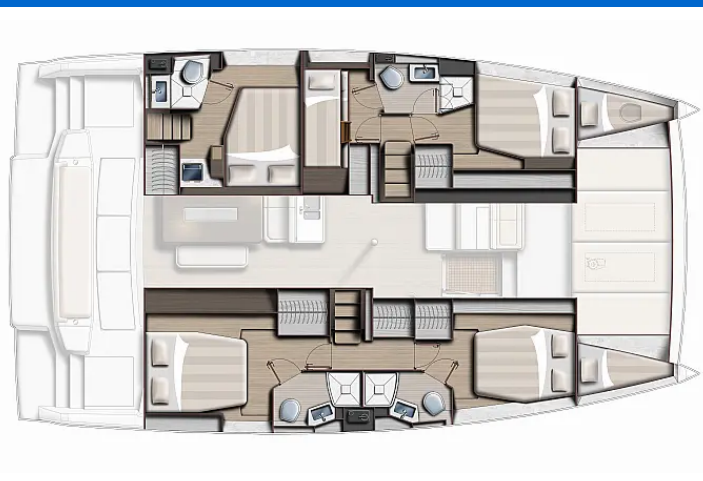


BALI 4.6

Enma (2023)

Catamaran Bali 4.6 Enma, built in 2023 is anchored in the Athens, Alimos marina, Athens area/Saronic/Peloponese, Greece. It has 7 cabins, can accommodate 10 people and has 5 toilets. Bed linen and kitchen equipment are included in the price.



YACHT SPECIFICATIONS

Yacht Base

Athens, Alimos marina, Greece

Yacht ID

6464

Brands

Catana

Yacht name

Enma

Production year

2023

Length

47 ft

Cabins

7

Berths

10

Max Persons

12

WC

5

Engine

2 x 40 HP

Fuel tank

800 l



WEBSITE

www.plujeme.cz



PHONE

+420 720 755 085



MOBILE

+420 777 170 276



E-MAIL

info@plujeme.cz



PLUJEME RÁDI S.R.O.

Dlouhá 730/35, 11000 Praha 1 – Staré Město, Czech Republic

STANDARD YACHT EQUIPMENT

Comfort	Cockpit cushions
Deck	Teak deck
Entertainment	Outdoor speakers, Underwater lights
Galley	Hot water, NESPRESSO coffee machine
Navigation	Autopilot, GPS chart plotter
Sails	Electric halyard winch, Electric winch, Lazy bag, Lazy jacks
Yacht electrics	Air Conditioning, Batteries, Generator, Watermaker - desalinator



WEBSITE

www.plujeme.cz



E-MAIL

info@plujeme.cz



PHONE

+420 720 755 085



MOBILE

+420 777 170 276



PLUJEME RÁDI S.R.O.

Dlouhá 730/35, 11000 Praha 1 – Staré Město, Czech Republic

SERVICES

SELECTED SERVICES	OBLIGATORY	PAYMENT TYPE	PRICE
<p>Generator (Payable at the base)</p> <p>Season: 2025. Generator Fair Use Policy: Free of Charge 8 hours per day. 10 € per extra hour or 200 € per week for unlimited use.; Payable on the spot with cash</p>	Yes	per hour	0,00 €
<p>Skipper (Payable at the base)</p> <p>Season: 2025. (Crew require their own cabin); Payable on the spot with cash</p>	Yes	per day + food	200,00 €
<p>Starter pack (Payable at the base)</p> <p>Season: 2025. End cleaning, 1x Cooking gas, Water, Linen 1 set (2 sheets, 1 pillow case, 1 bath towel) per person, Harbour fees for the first & last night. * If there is pet on board, then double cleaning will be applied.; Payable on the spot with cash 🧺 bag with Greek Local Products is offered to all of our charters as a welcome gift.</p>	Yes	per booking	350,00 €
<p>Crew change (Payable at the base)</p> <p>Season: 2025. Payable on the spot with cash</p>	No	per booking	150,00 €
<p>Early boarding/check-in (Payable at the base)</p> <p>Season: 2025. Access to the yacht by 14:00 In the event of delay beyond our control refunds will be made.; Payable on the spot with cash</p>	No	per booking	250,00 €
<p>Hostess (Payable at the base)</p> <p>Season: 2025. *crew require their own cabin; Payable on the spot with cash Down payment is required and 25% charge applicable if crew is cancelled less than 4 weeks before embarkation. 100% charge applicable If crew is cancelled less than 14 days prior to embarkation</p>	No	per day + food	180,00 €
<p>Internet pack (Payable at the base)</p> <p>Season: 2025. +20 € per week after the 1st (WiFi hotspot for up to 5 devices and unlimited usage of internet); Payable on the spot with cash</p>	No	per booking	70,00 €
<p>Linen Pack (Payable at the base)</p> <p>Season: 2025. 1 Extra set of linen (2 sheets, 1 pillow case, 1 bath towel); Payable on the spot with cash</p>	No	per set	10,00 €
<p>Non refundable deposit/ insurance (Payable at the base)</p> <p>Season: 2025. + refundable deposit 1000 EUR; non refundable payable on spot in cash and refundable payable by credit card on spot. MG yachts reserves the right to deny the damage waiver on the spot</p>	No	per booking	600,00 €

Welcome package (Payable at the base)

No

per booking

70,00 €

Season: 2025. Toilet and Kitchen rolls, matches, Plastic bags for rubbish, 1 Dish Sponge, 1 Dish, Soap, Sugar, Salt and Pepper, Coffee, 6 bottles of Water, 1 bottle of wine, 6 cans of Coke, 6 cans of Beer, Milk, Orange Juice;
Payable on the spot with cash



WEBSITE

www.plujeme.cz



E-MAIL

info@plujeme.cz



PHONE

+420 720 755 085



MOBILE

+420 777 170 276



PLUJEME RÁDI S.R.O.

Dlouhá 730/35, 11000 Praha 1 – Staré Město, Czech Republic

ADDITIONAL EXTRAS

EXTRA	OBLIGATORY	PAYMENT TYPE	PRICE
Automatic Inflatable Life Jacket (Payable at the base) Season: 2025. Payable on the spot with cash - Payable at the base	No	per person	30,00 €
Beach towel (Payable at the base) Season: 2025. Payable on the spot with cash - Payable at the base	No	per piece	5,00 €
Bed linen (Payable at the base) Season: 2025. Payable on the spot with cash - Payable at the base	No	per set	10,00 €
Blister (Payable at the base) Season: 2025. + additional security deposit 500EUR; Payable on the spot with cash - Payable at the base	No	per week	200,00 €
Electric outboard engine (Payable at the base) Season: 2025. 3 HP; Subject to availability, payable on the spot with cash - Payable at the base	No	per week	120,00 €
Kayak (Payable at the base) Season: 2025. Payable on the spot with cash - Payable at the base	No	per week	130,00 €
Life jacket (children) (Payable at the base) Season: 2025. for children under 25 kg, one included in every yacht free of charge; Payable on the spot with cash - Payable at the base	No	per week/ person	20,00 €
Railing net (Safety net) (Payable at the base) Season: 2025. 200 € for yachts up to 46 ft., 260 € per week for yachts above 46ft & catamarans (Half price if the railing net is supplied uninstalled). Payable on the spot with cash - Payable at the base	No	per week	260,00 €
SEA-DOO underwater scooter (Payable at the base) Season: 2025. Payable on the spot with cash - Payable at the base	No	per week	150,00 €
Snorkeling equipment (Payable at the base) Season: 2025. The set contains mask, inhalator and flippers; Payable on the spot with cash - Payable at the base	No	per week/ person	10,00 €

Stand up paddle (SUP) (Payable at the base) Season: 2025. Payable on the spot with cash - Payable at the base	No	per week	130,00 €
--	----	----------	-----------------



WEBSITE

www.plujeme.cz



PHONE

+420 720 755 085



per week
MOBILE

+420 777 170 276



E-MAIL

info@plujeme.cz



PLUJEME RÁDI S.R.O.

Dlouhá 730/35, 11000 Praha 1 – Staré Město, Czech Republic

PRICE AND AVAILABILITY

04.01. - 11.01.2025 4.470 € 6.770 €	11.01. - 18.01.2025 4.470 € 6.770 €	18.01. - 25.01.2025 4.470 € 6.770 €	25.01. - 01.02.2025 4.470 € 6.770 €
01.02. - 08.02.2025 4.470 € 6.770 €	08.02. - 15.02.2025 4.470 € 6.770 €	15.02. - 22.02.2025 4.470 € 6.770 €	22.02. - 01.03.2025 NOT AVAILABLE
01.03. - 08.03.2025 4.470 € 6.770 €	08.03. - 15.03.2025 4.470 € 6.770 €	15.03. - 22.03.2025 4.470 € 6.770 €	22.03. - 29.03.2025 4.470 € 6.770 €
29.03. - 05.04.2025 4.470 € 6.770 €	05.04. - 12.04.2025 4.470 € 6.770 €	12.04. - 19.04.2025 4.470 € 6.770 €	19.04. - 26.04.2025 4.470 € 7.750 €
26.04. - 03.05.2025 6.540 € 7.750 €	03.05. - 10.05.2025 6.540 € 7.750 €	10.05. - 17.05.2025 6.540 € 7.750 €	17.05. - 24.05.2025 NOT AVAILABLE
24.05. - 31.05.2025 NOT AVAILABLE	31.05. - 07.06.2025 NOT AVAILABLE	07.06. - 14.06.2025 NOT AVAILABLE	14.06. - 21.06.2025 NOT AVAILABLE
21.06. - 28.06.2025 NOT AVAILABLE	28.06. - 05.07.2025 9.780 € 11.300 €	05.07. - 12.07.2025 NOT AVAILABLE	12.07. - 19.07.2025 NOT AVAILABLE
19.07. - 26.07.2025 9.780 € 11.300 €	26.07. - 02.08.2025 12.120 € 13.600 €		



WEBSITE

www.plujeme.cz



E-MAIL

info@plujeme.cz



PHONE

+420 720 755 085



MOBILE

+420 777 170 276



PLUJEME RÁDI S.R.O.

Dlouhá 730/35, 11000 Praha 1 – Staré Město, Czech Republic

PRICE AND AVAILABILITY

02.08. - 09.08.2025 12.120 € 13.600 €	09.08. - 16.08.2025 12.120 € 13.600 €	16.08. - 23.08.2025 NOT AVAILABLE	23.08. - 30.08.2025 NOT AVAILABLE
30.08. - 06.09.2025 NOT AVAILABLE	06.09. - 13.09.2025 9.550 €	13.09. - 27.09.2025 NOT AVAILABLE	27.09. - 04.10.2025 NOT AVAILABLE
04.10. - 11.10.2025 6.450 € 6.770 €	11.10. - 18.10.2025 NOT AVAILABLE	18.10. - 25.10.2025 4.470 € 6.770 €	25.10. - 01.11.2025 4.470 € 6.770 €
01.11. - 08.11.2025 4.470 € 6.770 €	08.11. - 15.11.2025 4.470 € 6.770 €	15.11. - 22.11.2025 4.470 € 6.770 €	22.11. - 29.11.2025 4.470 € 6.770 €
29.11. - 06.12.2025 4.470 € 6.770 €	06.12. - 13.12.2025 4.470 € 6.770 €	13.12. - 20.12.2025 4.470 € 6.770 €	20.12. - 27.12.2025 4.470 € 6.770 €



WEBSITE
www.plujeme.cz



E-MAIL
info@plujeme.cz



PHONE
+420 720 755 085



MOBILE
+420 777 170 276



PLUJEME RÁDI S.R.O.
Dlouhá 730/35, 11000 Praha 1 – Staré Město, Czech Republic