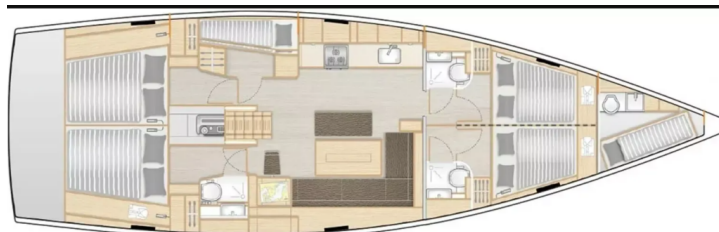


# HANSE 508

Big Blue (2020)

Sailing yacht Hanse 508 Big Blue, built in 2020 is anchored in the Athens, Alimos marina, Athens area/Saronic/Peloponese, Greece. It has 6 cabins, can accommodate 10 + 2 people and has 3 + 1 toilets. Bed linen and kitchen equipment are included in the price.



## YACHT SPECIFICATIONS

Yacht Base

**Athens, Alimos marina, Greece**

Yacht ID

**4531**

Brands

**Hanse Yachts**

Yacht name

**Big Blue**

Production year

**2020**

Length

**51 ft**

Cabins

**6**

Berths

**10 + 2**

Max Persons

**12**

WC

**3 + 1**

Engine

**1 x 80 HP**

Fuel tank

**280 l**



**WEBSITE**

[www.plujeme.cz](http://www.plujeme.cz)



**PHONE**

+420 720 755 085



**MOBILE**

+420 777 170 276



**E-MAIL**

[info@plujeme.cz](mailto:info@plujeme.cz)



**PLUJEME RÁDI S.R.O.**

Dlouhá 730/35, 11000 Praha 1 – Staré Město, Czech Republic

## STANDARD YACHT EQUIPMENT

Comfort	<b>Blankets, Pillows, Sheets, Towels</b>
Deck	<b>Bimini top, Black ball, Bosun's chair (Safe seat) (boatswain's chair), Dinghy with outboard engine, Sprayhood</b>
Galley	<b>Kitchen utensils (Galley equipment, cutlery), Oven, Refrigerator, Stove</b>
Interior	<b>Barometer, Clock, Convertible table in salon</b>
Navigation	<b>Autopilot, Binoculars, Bow thruster, Compass, Divider, nautic chart, Echosounder/Depthsounder, GPS, GPS chart plotter, Hand bearing compass, Parallel ruler, Pilot book, Radar reflector, Speedometer (Speed log), Wind instrument/Anemometer</b>
Safety	<b>Distress flare box, Emergency tiller, Fire extinguisher , First aid kit , Floating light, Fog horn, Horseshoe lifebuoy, Life belts (Safety harness), Life jackets, Liferaft , Repair kit, Set of tools , Torch, VHF radio</b>
Yacht electrics	<b>Air Conditioning, Shore power connection</b>



#### WEBSITE

[www.plujeme.cz](http://www.plujeme.cz)



#### E-MAIL

[info@plujeme.cz](mailto:info@plujeme.cz)



#### PHONE

+420 720 755 085



#### MOBILE

+420 777 170 276



#### PLUJEME RÁDI S.R.O.

Dlouhá 730/35, 11000 Praha 1 – Staré Město, Czech Republic

## SERVICES

SELECTED SERVICES	OBLIGATORY	PAYMENT TYPE	PRICE
<b>Starter pack</b> (Payable at the base) <b>Season: 2024.</b> End cleaning, 1x Cooking gas, Water, Linen 1 set (2 sheets, 1 pillow case, 1 bath towel) per person, Harbour fees for the first & last night. * If there is pet on board, then double cleaning will be applied.; Payable on the spot with cash 🇪🇺 bag with Greek Local Products is offered to all of our charters as a welcome gift.	Yes	per booking	<b>300,00 €</b>
<b>Starter pack</b> (Payable at the base) <b>Season: 2025.</b> End cleaning, 1x Cooking gas, Water, Linen 1 set (2 sheets, 1 pillow case, 1 bath towel) per person, Harbour fees for the first & last night. * If there is pet on board, then double cleaning will be applied.; Payable on the spot with cash 🇪🇺 bag with Greek Local Products is offered to all of our charters as a welcome gift.	Yes	per booking	<b>300,00 €</b>
<b>Crew change</b> (Payable at the base) <b>Season: 2024.</b> Payable on the spot with cash	Yes	per booking	<b>150,00 €</b>
<b>Early boarding/check-in</b> (Payable at the base) <b>Season: 2024.</b> Access to the yacht by 14:00 In the event of delay beyond our control refunds will be made.; Payable on the spot with cash	Yes	per booking	<b>150,00 €</b>
<b>Hostess</b> (Payable at the base) <b>Season: 2024.</b> or 190€ / day for more than 10 pax. *crew require their own cabin; Payable on the spot with cash Down payment is required and 25% charge applicable if crew is cancelled less than 4 weeks before embarkation. 100% charge applicable If crew is cancelled less than 14 days prior to embarkation	Yes	per day + food	<b>170,00 €</b>
<b>Internet pack</b> (Payable at the base) <b>Season: 2024.</b> +20 € per week after the 1st (WiFi hotspot for up to 5 devices and unlimited usage of internet); Payable on the spot with cash	Yes	per booking	<b>70,00 €</b>
<b>Linen Pack</b> (Payable at the base) <b>Season: 2024.</b> 1 Extra set of linen (2 sheets, 1 pillow case, 1 bath towel); Payable on the spot with cash	Yes	per set	<b>15,00 €</b>

<b>Non refundable deposit/ insurance</b> (Payable at the base) <b>Season: 2024.</b> + refundable deposit 700 EUR; non refundable payable on spot in cash and refundable payable by credit card on spot. Charter Company reserves the right not to accept this option due to weather conditions or skipper's incompetence.	Yes	per booking	<b>400,00 €</b>
<b>Skipper</b> (Payable at the base) <b>Season: 2024.</b> (Crew require their own cabin); Payable on the spot with cash Down payment is required and 25% charge applicable if crew is cancelled less than 4 weeks before embarkation. 100% charge applicable if crew is cancelled less than 14 days prior to embarkation	Yes	per day + food	<b>190,00 €</b>
<b>Welcome package</b> (Payable at the base) <b>Season: 2024.</b> Toilet and Kitchen rolls, matches, Plastic bags for rubbish, 1 Dish Sponge, 1 Dish, Soap, Sugar, Salt and Pepper, Coffee, 6 bottles of Water, 1 bottle of wine, 6 cans of Coke, 6 cans of Beer, Milk, Orange Juice; Payable on the spot with cash	Yes	per booking	<b>70,00 €</b>
<b>Crew change</b> (Payable at the base) <b>Season: 2025.</b> Payable on the spot with cash	Yes	per booking	<b>150,00 €</b>
<b>Early boarding/check-in</b> (Payable at the base) <b>Season: 2025.</b> Access to the yacht by 14:00 In the event of delay beyond our control refunds will be made.; Payable on the spot with cash	Yes	per booking	<b>150,00 €</b>
<b>Hostess</b> (Payable at the base) <b>Season: 2025.</b> or 190€ / day for more than 10 pax. *crew require their own cabin; Payable on the spot with cash Down payment is required and 25% charge applicable if crew is cancelled less than 4 weeks before embarkation. 100% charge applicable if crew is cancelled less than 14 days prior to embarkation	Yes	per day + food	<b>170,00 €</b>
<b>Internet pack</b> (Payable at the base) <b>Season: 2025.</b> +20 € per week after the 1st (WiFi hotspot for up to 5 devices and unlimited usage of internet); Payable on the spot with cash	Yes	per booking	<b>70,00 €</b>
<b>Linen Pack</b> (Payable at the base) <b>Season: 2025.</b> 1 Extra set of linen (2 sheets, 1 pillow case, 1 bath towel); Payable on the spot with cash	Yes	per set	<b>15,00 €</b>
<b>Non refundable deposit/ insurance</b> (Payable at the base) <b>Season: 2025.</b> + refundable deposit 700 EUR; non refundable payable on spot in cash and refundable payable by credit card on spot. Charter Company reserves the right not to accept this option due to weather conditions or skipper's incompetence.	Yes	per booking	<b>400,00 €</b>

**Skipper** (Payable at the base)

Yes

per day + food

**190,00 €**

**Season: 2025.** (Crew require their own cabin); Payable on the spot with cash Down payment is required and 25% charge applicable if crew is cancelled less than 4 weeks before embarkation. 100% charge applicable if crew is cancelled less than 14 days prior to embarkation

**Welcome package** (Payable at the base)

Yes

per booking

**70,00 €**

**Season: 2025.** Toilet and Kitchen rolls, matches, Plastic bags for rubbish, 1 Dish Sponge, 1 Dish, Soap, Sugar, Salt and Pepper, Coffee, 6 bottles of Water, 1 bottle of wine, 6 cans of Coke, 6 cans of Beer, Milk, Orange Juice; Payable on the spot with cash



**WEBSITE**

[www.plujeme.cz](http://www.plujeme.cz)



**PHONE**

+420 720 755 085



**MOBILE**

+420 777 170 276



**E-MAIL**

[info@plujeme.cz](mailto:info@plujeme.cz)



**PLUJEME RÁDI S.R.O.**

Dlouhá 730/35, 11000 Praha 1 – Staré Město, Czech Republic

## ADDITIONAL EXTRAS

EXTRA	OBLIGATORY	PAYMENT TYPE	PRICE
<b>Automatic Inflatable Life Jacket</b> (Payable at the base) <b>Season: 2024.</b> Payable on the spot with cash - Payable at the base	Yes	per week/ person	<b>30,00 €</b>
<b>Beach towel</b> (Payable at the base) <b>Season: 2024.</b> Payable on the spot with cash - Payable at the base	Yes	per piece	<b>5,00 €</b>
<b>Blister</b> (Payable at the base) <b>Season: 2024.</b> + additional security deposit 500EUR; Payable on the spot with cash - Payable at the base	Yes	per week	<b>200,00 €</b>
<b>Electric outboard engine</b> (Payable at the base) <b>Season: 2024.</b> 3 HP - Payable at the base	Yes	per week	<b>120,00 €</b>
<b>Kayak</b> (Payable at the base) <b>Season: 2024.</b> Payable on the spot with cash - Payable at the base	Yes	per week	<b>130,00 €</b>
<b>Life jacket (children)</b> (Payable at the base) <b>Season: 2024.</b> for children under 25 kg, one included in every yacht free of charge; Payable on the spot with cash - Payable at the base	Yes	per week/ person	<b>20,00 €</b>
<b>Railing net (Safety net)</b> (Payable at the base) <b>Season: 2024.</b> 200 € for yachts up to 46 ft., 260 € per week for yachts above 46ft & catamarans (Half price if the railing net is supplied uninstalled). Payable on the spot with cash - Payable at the base	Yes	per week	<b>260,00 €</b>
<b>Railing net (Safety net)</b> (Payable at the base) <b>Season: 2024.</b> 200 € for yachts up to 46 ft., 260 € per week for yachts above 46ft & catamarans (Half price if the railing net is supplied uninstalled). Payable on the spot with cash - Payable at the base	Yes	per week	<b>260,00 €</b>
<b>SEA-DOO underwater scooter</b> (Payable at the base) <b>Season: 2024.</b> Payable on the spot with cash - Payable at the base	Yes	per week	<b>150,00 €</b>
<b>Snorkeling equipment</b> (Payable at the base) <b>Season: 2024.</b> The set contains mask, inhalator and flippers - Payable at the base	Yes	per week/ person	<b>10,00 €</b>
<b>Stand up paddle (SUP)</b> (Payable at the base) <b>Season: 2024.</b> Payable on the spot with cash - Payable at the base	Yes	per week	<b>130,00 €</b>

<b>Automatic Inflatable Life Jacket</b> (Payable at the base) <b>Season: 2025.</b> Payable on the spot with cash - Payable at the base	Yes	per week/ person	<b>30,00 €</b>
<b>Beach towel</b> (Payable at the base) <b>Season: 2025.</b> Payable on the spot with cash - Payable at the base	Yes	per piece	<b>5,00 €</b>
<b>Blister</b> (Payable at the base) <b>Season: 2025.</b> + additional security deposit 500EUR; Payable on the spot with cash - Payable at the base	Yes	per week	<b>200,00 €</b>
<b>Electric outboard engine</b> (Payable at the base) <b>Season: 2025.</b> 3 HP - Payable at the base	Yes	per week	<b>120,00 €</b>
<b>Kayak</b> (Payable at the base) <b>Season: 2025.</b> Payable on the spot with cash - Payable at the base	Yes	per week	<b>130,00 €</b>
<b>Life jacket (children)</b> (Payable at the base) <b>Season: 2025.</b> for children under 25 kg, one included in every yacht free of charge; Payable on the spot with cash - Payable at the base	Yes	per week/ person	<b>20,00 €</b>
<b>Railing net (Safety net)</b> (Payable at the base) <b>Season: 2025.</b> 200 € for yachts up to 46 ft., 260 € per week for yachts above 46ft & catamarans (Half price if the railing net is supplied uninstalled). Payable on the spot with cash - Payable at the base	Yes	per week	<b>260,00 €</b>
<b>SEA-DOO underwater scooter</b> (Payable at the base) <b>Season: 2025.</b> Payable on the spot with cash - Payable at the base	Yes	per week	<b>150,00 €</b>
<b>Snorkeling equipment</b> (Payable at the base) <b>Season: 2025.</b> The set contains mask, inhalator and flippers - Payable at the base	Yes	per week/ person	<b>10,00 €</b>
<b>Stand up paddle (SUP)</b> (Payable at the base) <b>Season: 2025.</b> Payable on the spot with cash - Payable at the base	Yes	per week	<b>130,00 €</b>



**WEBSITE**  
www.plujeme.cz



**E-MAIL**  
info@plujeme.cz



**PHONE**  
+420 720 755 085



**PLUJEME RÁDI S.R.O.**  
Dlouhá 730/35, 11000 Praha 1 – Staré Město, Czech Republic



**MOBILE**  
+420 777 170 276

## PRICE AND AVAILABILITY

05.10. - 12.10.2024 NOT AVAILABLE	12.10. - 19.10.2024 NOT AVAILABLE	19.10. - 26.10.2024 2.590 € 3.700 €	26.10. - 02.11.2024 2.590 € 3.700 €
02.11. - 09.11.2024 2.590 € 3.700 €	09.11. - 16.11.2024 2.590 € 3.700 €	16.11. - 23.11.2024 2.590 € 3.700 €	23.11. - 30.11.2024 3.700 €
30.11. - 07.12.2024 3.700 €	07.12. - 14.12.2024 3.700 €	14.12. - 21.12.2024 3.700 €	21.12. - 01.03.2025 NOT AVAILABLE
01.03. - 08.03.2025 2.091 € 3.700 €	08.03. - 15.03.2025 2.091 € 3.700 €	15.03. - 22.03.2025 2.091 € 3.700 €	22.03. - 29.03.2025 2.091 € 3.700 €
29.03. - 05.04.2025 2.091 € 3.700 €	05.04. - 12.04.2025 2.091 € 3.700 €	12.04. - 19.04.2025 2.091 € 3.700 €	19.04. - 26.04.2025 2.092 € 4.700 €
26.04. - 03.05.2025 NOT AVAILABLE			



**WEBSITE**  
[www.plujeme.cz](http://www.plujeme.cz)



**E-MAIL**  
[info@plujeme.cz](mailto:info@plujeme.cz)



**PHONE**  
+420 720 755 085



**PLUJEME RÁDI S.R.O.**  
Dlouhá 730/35, 11000 Praha 1 – Staré Město, Czech Republic



**MOBILE**  
+420 777 170 276



## PRICE AND AVAILABILITY

03.05. - 10.05.2025 <b>3.408 €</b> 4.700 €	10.05. - 17.05.2025 <b>3.408 €</b> 4.700 €	17.05. - 24.05.2025 NOT AVAILABLE	24.05. - 31.05.2025 NOT AVAILABLE
31.05. - 07.06.2025 <b>4.350 €</b> 5.800 €	07.06. - 14.06.2025 <b>4.350 €</b> 5.800 €	14.06. - 21.06.2025 <b>4.964 €</b> 6.800 €	21.06. - 28.06.2025 <b>4.964 €</b> 6.800 €
28.06. - 05.07.2025 <b>4.964 €</b> 6.800 €	05.07. - 04.10.2025 NOT AVAILABLE	04.10. - 11.10.2025 <b>3.219 €</b> 3.700 €	11.10. - 18.10.2025 <b>2.701 €</b> 3.700 €
18.10. - 25.10.2025 <b>2.701 €</b> 3.700 €	25.10. - 01.11.2025 <b>2.701 €</b> 3.700 €	01.11. - 08.11.2025 <b>2.701 €</b> 3.700 €	08.11. - 15.11.2025 <b>2.701 €</b> 3.700 €
15.11. - 22.11.2025 <b>2.701 €</b> 3.700 €	22.11. - 29.11.2025 <b>2.701 €</b> 3.700 €	29.11. - 06.12.2025 <b>2.701 €</b> 3.700 €	06.12. - 13.12.2025 <b>2.701 €</b> 3.700 €
13.12. - 20.12.2025 <b>2.701 €</b> 3.700 €	20.12. - 27.12.2025 <b>2.701 €</b> 3.700 €		



WEBSITE

[www.plujeme.cz](http://www.plujeme.cz)



E-MAIL

[info@plujeme.cz](mailto:info@plujeme.cz)



PHONE

+420 720 755 085



MOBILE

+420 777 170 276



PLUJEME RÁDI S.R.O.

Dlouhá 730/35, 11000 Praha 1 – Staré Město, Czech Republic