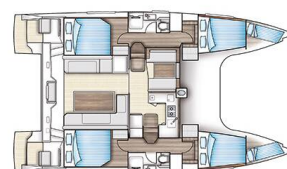


NAUTITECH 40 OPEN

CLASS (2020)

Catamaran Nautitech 40 Open CLASS, built in 2020 is anchored in the **St. Martin, Marina Port de Plaisance, St. Martin, Caribbean**. It has **4 + 2 cabins**, can accommodate **8 + 2 people** and has **2 toilets**. Bed linen and kitchen equipment are included in the price.



YACHT SPECIFICATIONS

Yacht Base

**St. Martin, Marina Port de Plaisance,
Caribbean**

Yacht ID

4301

Brands

Nautitech

Yacht name

CLASS

Production year

2020

Length

39 ft

Cabins

4 + 2

Berths

8 + 2

Max Persons

10

WC

2

Engine

2 x 40 HP

Fuel tank

450 l



WEBSITE

www.plujeme.cz



PHONE

+420 720 755 085



MOBILE

+420 777 170 276



E-MAIL

info@plujeme.cz



PLUJEME RÁDI S.R.O.

Dlouhá 730/35, 11000 Praha 1 – Staré Město, Czech Republic

STANDARD YACHT EQUIPMENT

Comfort	Cockpit cushions
Deck	Anchor, Bathing platform, Bimini top, Cockpit/stern, outside shower, Deck brush, Dinghy, Electric anchor windlass, Fenders, Outboard engine, Plastic bucket, Sprayhood
Entertainment	Fusion radio, Outdoor speakers, USB
Galley	Hot water, Kitchen utensils (Galley equipment, cutlery), Oven, Refrigerator, Stove
Interior	Electric fans, Inside shower
Navigation	Autopilot, Compass, GPS, GPS chart plotter, Logge/Lot/Speed, Nautical charts, Navigation set, Wind instrument/Anemometer
Safety	Black Water Tank, Fire extinguisher , First aid kit , Flashlight, Safety equipment, Set of tools , VHF radio
Sails	Lazy bag, Lazy jacks
Yacht electrics	Inverter



WEBSITE

www.plujeme.cz



PHONE

+420 720 755 085



MOBILE

+420 777 170 276



E-MAIL

info@plujeme.cz



PLUJEME RÁDI S.R.O.

Dlouhá 730/35, 11000 Praha 1 – Staré Město, Czech Republic

SERVICES

SELECTED SERVICES	OBLIGATORY	PAYMENT TYPE	PRICE
<p>Clearance formalities (Payable at the base)</p> <p>Season: 2025. Extremely Important notice: Client/skipper is obligated to complete immigration and clearance procedures in every island he visits including the French side of St. Martin before returning at base for the check out, otherwise authorities will block the yacht. In case that charter/skipper fails to complete the procedures in the islands he will visit before returning at St. Martin, the next charter will not be possible to start and we will have the right to withdraw the refundable security deposit of the charter as compensation.</p>	Yes	per service	250,00 €
<p>Service Pack (Payable at the base)</p> <p>Season: 2025. includes: final cleaning, water / 1x cooking gas bottle at the departure, batteries, linen equipment (towels included) for each crew member</p>	Yes	per booking	325,00 €
<p>Early Check in (Payable at the base)</p> <p>Season: 2025. Embarkation at 13:00h option is subject to the condition that the yacht returns without damages from the previous charter</p>	No	per booking	300,00 €
<p>Harbour and marine fee (Payable at the base)</p> <p>Season: 2025. for the first and the last charter-night</p>	No	per booking	0,00 €
<p>Non refundable deposit/ insurance (Payable at the base)</p> <p>Season: 2025. payable only by credit card, when purchased, risk & security deposit is limited at 700€</p>	No	per day	45,00 €
<p>Regatta charge (Payable at the base)</p> <p>Season: 2025. security deposit increased by EUR 1000</p>	No	per booking	1.500,00 €
<p>Regatta package (Payable at the base)</p> <p>Season: 2025. includes: briefing, preparation, gauging of sails, registration, technical assistance during the race: security deposit increased by EUR 1000 mandatory (race package includes: briefing, preparation, gauging of sails, registration, technical assistance during the race)</p>	No	per booking	1.100,00 €
<p>Starter pack (Payable at the base)</p> <p>Season: 2025. washing up liquid, sponge, dish soap, fish bags, matches, toilet paper, toilet rolls, fruit plate, water, orange juice, wine, packet of biscuits, individual sachets of tea, coffee, etc.</p>	No	per booking	50,00 €



WEBSITE
www.plujeme.cz



PHONE
+420 720 755 085



MOBILE
+420 777 170 276



EMAIL
info@plujeme.cz



PLUJEME RÁDI S.R.O.
Dlouhá 730/35, 11000 Praha 1 – Staré Město, Czech Republic

ADDITIONAL EXTRAS

EXTRA	OBLIGATORY	PAYMENT TYPE	PRICE
Railing net (Safety net) <i>(Payable at the base)</i> Season: 2025. <i>Payable at the base</i>	No	per booking	150,00 €
Spinnaker <i>(Payable at the base)</i> Season: 2025. <i>asymmetrical; on request, not available for all yachts & bases - Payable at the base</i>	No	per week	200,00 €

**WEBSITE**

www.plujeme.cz

**E-MAIL**

info@plujeme.cz

**PHONE**

+420 720 755 085

**MOBILE**

+420 777 170 276

**PLUJEME RÁDI S.R.O.**

Dlouhá 730/35, 11000 Praha 1 – Staré Město, Czech Republic

PRICE AND AVAILABILITY

05.04. - 12.04.2025

4.088 € 5.450 €

18.04. - 02.05.2025

NOT AVAILABLE

03.05. - 10.05.2025

3.056 € 4.074 €

15.05. - 30.12.2025

NOT AVAILABLE



WEBSITE

www.plujeme.cz



E-MAIL

info@plujeme.cz



PHONE

+420 720 755 085



MOBILE

+420 777 170 276



PLUJEME RÁDI S.R.O.

Dlouhá 730/35, 11000 Praha 1 – Staré Město, Czech Republic