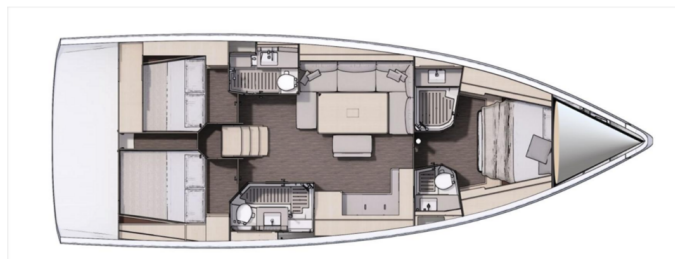


# DUFOUR 470

Jolie (2022)

Sailing yacht Dufour 470 Jolie, built in 2022 is anchored in the Marina Šangulin, Biograd, Zadar region, Croatia. It has 3 cabins, can accommodate 6 + 2 people and has 3 toilets. Bed linen and kitchen equipment are included in the price.



## YACHT SPECIFICATIONS

Yacht Base

**Marina Šangulin, Biograd, Croatia**

Yacht ID

**3799**

Brands

**Dufour**

Yacht name

**Jolie**

Production year

**2022**

Length

**49 ft**

Cabins

**3**

Berths

**6 + 2**

Max Persons

**8**

WC

**3**

Engine

**1 x 75 HP**

Fuel tank

**250 l**



**WEBSITE**

[www.plujeme.cz](http://www.plujeme.cz)



**PHONE**

+420 720 755 085



**MOBILE**

+420 777 170 276



**E-MAIL**

[info@plujeme.cz](mailto:info@plujeme.cz)



**PLUJEME RÁDI S.R.O.**

Dlouhá 730/35, 11000 Praha 1 – Staré Město, Czech Republic

## STANDARD YACHT EQUIPMENT

|                 |                                                                                                                                                                                                                                                                                                                                                         |
|-----------------|---------------------------------------------------------------------------------------------------------------------------------------------------------------------------------------------------------------------------------------------------------------------------------------------------------------------------------------------------------|
| Comfort         | <b>Bed linen, Cockpit cushions, Pillows</b>                                                                                                                                                                                                                                                                                                             |
| Deck            | <b>Bathing platform, Bilge pump - Mechanic, Bimini top, Boat hook, Cockpit fridge, Cockpit grill, Cockpit table, Cockpit/stern, outside shower, Dinghy, Dinghy (byboat) pump, Electric anchor windlass, Fenders, Gangway, Main anchor, Mooring ropes , Spare anchor (Reserve, Auxiliary anchor), Sprayhood, Teak cockpit, Water hose, Winch handles</b> |
| Entertainment   | <b>Outdoor speakers, Radio, Wi-Fi Internet</b>                                                                                                                                                                                                                                                                                                          |
| Galley          | <b>Electrical kettle, Gas bottles, Gas cookers, Kitchen utensils (Galley equipment, cutlery), Moka pot, Oven, Refrigerator, Sink</b>                                                                                                                                                                                                                    |
| Interior        | <b>Carpet, Duvet cover</b>                                                                                                                                                                                                                                                                                                                              |
| Navigation      | <b>Autopilot, Binoculars, Bow thruster, Compass, GPS chart plotter - cockpit, Hand bearing compass, Navigation (Nautical) charts and nautical guide , Navigation set, Radar reflector, Tridata, Wind instrument/Anemometer</b>                                                                                                                          |
| Safety          | <b>Black Water Tank, Distress flare box, Emergency tiller, Fire extinguisher , First aid kit , Flashlight, Fog horn, Horseshoe lifebuoy, Life belts (Safety harness), Life jackets, Repair kit, Set of tools , VHF radio</b>                                                                                                                            |
| Sails           | <b>Winch</b>                                                                                                                                                                                                                                                                                                                                            |
| Yacht electrics | <b>220V socket, Air Conditioning, Battery charger , Bilge pump - Electric, Heating, Service batteries, Shore connection 220 V, Solar panels</b>                                                                                                                                                                                                         |



**WEBSITE**

[www.plujeme.cz](http://www.plujeme.cz)



**PHONE**

+420 720 755 085



**MOBILE**

+420 777 170 276



**E-MAIL**

[info@plujeme.cz](mailto:info@plujeme.cz)



**PLUJEME RÁDI S.R.O.**

Dlouhá 730/35, 11000 Praha 1 - Staré Město, Czech Republic

## SERVICES

| SELECTED SERVICES                                                                                                                                                                                                           | OBLIGATORY | PAYMENT TYPE | PRICE           |
|-----------------------------------------------------------------------------------------------------------------------------------------------------------------------------------------------------------------------------|------------|--------------|-----------------|
| <b>Transit log</b> (Payable at the base)<br><b>Season: 2024 - Angelina Yachtcharter.</b> includes final cleaning, gas, bedlinen (1 set/person), Wi-Fi 70GB/week, package for toilets and kitchen, check in and out services | Yes        | per booking  | <b>245,00 €</b> |
| <b>WiFi GRATIS ON BOAT</b> (Payable now)<br><b>Season: 2024 - Angelina Yachtcharter.</b> GRATIS                                                                                                                             | Yes        | per booking  | <b>0,00 €</b>   |
| <b>Transit log</b> (Payable at the base)<br><b>Season: 2025 - Angelina Yachtcharter.</b> includes final cleaning, gas, bedlinen (1 set/person), Wi-Fi 70GB/week, package for toilets and kitchen, check in and out services | Yes        | per booking  | <b>245,00 €</b> |
| <b>WiFi GRATIS ON BOAT</b> (Payable now)<br><b>Season: 2025 - Angelina Yachtcharter.</b> GRATIS                                                                                                                             | Yes        | per booking  | <b>0,00 €</b>   |
| <b>Basic pack</b> (Payable at the base)<br><b>Season: 2024 - Angelina Yachtcharter.</b> includes transit log, bath towels (2 sets per cabin - do not include skipper cabin)                                                 | Yes        | per booking  | <b>310,00 €</b> |
| <b>Comfort Pack</b> (Payable at the base)<br><b>Season: 2024 - Angelina Yachtcharter.</b> includes transit log, bath towels (2 sets per cabin - do not include skipper cabin), outboard engine (2,3/5,0 HP) and 1 SUP       | Yes        | per booking  | <b>470,00 €</b> |
| <b>Deposit insurance</b> (Payable at the base)<br><b>Season: 2024 - Angelina Yachtcharter.</b> + refundable deposit 200,00 EUR                                                                                              | Yes        | per booking  | <b>200,00 €</b> |
| <b>Early boarding/ check-in</b> (Payable at the base)<br><b>Season: 2024 - Angelina Yachtcharter.</b> boarding between 13:00 - 14:00h                                                                                       | Yes        | per booking  | <b>250,00 €</b> |
| <b>Extra cleaning</b> (Payable at the base)<br><b>Season: 2024 - Angelina Yachtcharter.</b> penalty fee for boat in dirty condition (garbage, dirty dishes, ect..)                                                          | Yes        | per booking  | <b>120,00 €</b> |
| <b>Pet on board</b> (Payable at the base)<br><b>Season: 2024 - Angelina Yachtcharter.</b> maximum 2 pets allowed                                                                                                            | Yes        | per booking  | <b>200,00 €</b> |

|                                                                                                                                                                          |     |             |                 |
|--------------------------------------------------------------------------------------------------------------------------------------------------------------------------|-----|-------------|-----------------|
| <b>Basic pack</b> (Payable at the base)                                                                                                                                  | Yes | per booking | <b>310,00 €</b> |
| <b>Season: 2025 - Angelina Yachtcharter.</b> includes transit log, bath towels (2 sets per cabin - do not include skipper cabin)                                         |     |             |                 |
| <b>Comfort Pack</b> (Payable at the base)                                                                                                                                | Yes | per booking | <b>470,00 €</b> |
| <b>Season: 2025 - Angelina Yachtcharter.</b> includes transit log, bath towels (2 sets per cabin - do not include skipper cabin), outboard engine (2,3/5,0 HP) and 1 SUP |     |             |                 |
| <b>Deposit insurance</b> (Payable at the base)                                                                                                                           | Yes | per booking | <b>200,00 €</b> |
| <b>Season: 2025 - Angelina Yachtcharter.</b> + refundable deposit 200,00 EUR                                                                                             |     |             |                 |
| <b>Early boarding/check-in</b> (Payable at the base)                                                                                                                     | Yes | per booking | <b>250,00 €</b> |
| <b>Season: 2025 - Angelina Yachtcharter.</b> boarding between 13:00 - 14:00h                                                                                             |     |             |                 |
| <b>Extra cleaning</b> (Payable at the base)                                                                                                                              | Yes | per booking | <b>120,00 €</b> |
| <b>Season: 2025 - Angelina Yachtcharter.</b> penalty fee for boat in dirty condition (garbage, dirty dishes, ect..)                                                      |     |             |                 |
| <b>Pet on board</b> (Payable at the base)                                                                                                                                | Yes | per booking | <b>200,00 €</b> |
| <b>Season: 2025 - Angelina Yachtcharter.</b> maximum 2 pets allowed                                                                                                      |     |             |                 |



**WEBSITE**

[www.plujeme.cz](http://www.plujeme.cz)



**PHONE**

+420 720 755 085



**MOBILE**

+420 777 170 276



**E-MAIL**

[info@plujeme.cz](mailto:info@plujeme.cz)



**PLUJEME RÁDI S.R.O.**

Dlouhá 730/35, 11000 Praha 1 - Staré Město, Czech Republic

## ADDITIONAL EXTRAS

| EXTRA                                                                                                                                                                                                                  | OBLIGATORY | PAYMENT TYPE | PRICE             |
|------------------------------------------------------------------------------------------------------------------------------------------------------------------------------------------------------------------------|------------|--------------|-------------------|
| <b>Beach towel</b> (Payable at the base)<br><b>Season: 2024 - Angelina Yachtcharter.</b> Payable at the base                                                                                                           | Yes        | per piece    | <b>12,00 €</b>    |
| <b>e-SUP</b> (Payable at the base)<br><b>Season: 2024 - Angelina Yachtcharter.</b> SipaBoards - Allrounder; + additional deposit 1500 EUR, order in advance due to limited quantity of equipment - Payable at the base | Yes        | per week     | <b>250,00 €</b>   |
| <b>eFoil</b> (Payable at the base)<br><b>Season: 2024 - Angelina Yachtcharter.</b> + 3000,00 EUR refundable deposit, order in advance due to limited quantity of equipment - Payable at the base                       | Yes        | per week     | <b>1.200,00 €</b> |
| <b>Extra bedlinen</b> (Payable at the base)<br><b>Season: 2024 - Angelina Yachtcharter.</b> Payable at the base                                                                                                        | Yes        | per set      | <b>10,00 €</b>    |
| <b>Kayak</b> (Payable at the base)<br><b>Season: 2024 - Angelina Yachtcharter.</b> *additional deposit 250 EUR, order in advance due to limited quantity of equipment - Payable at the base                            | Yes        | per week     | <b>120,00 €</b>   |
| <b>Outboard engine 2,3 HP</b> (Payable at the base)<br><b>Season: 2024 - Angelina Yachtcharter.</b> Payable at the base                                                                                                | Yes        | per week     | <b>100,00 €</b>   |
| <b>Railing net (Safety net)</b> (Payable at the base)<br><b>Season: 2024 - Angelina Yachtcharter.</b> order in advance due to limited quantity of equipment - Payable at the base                                      | Yes        | per booking  | <b>100,00 €</b>   |
| <b>Seabob</b> (Payable at the base)<br><b>Season: 2024 - Angelina Yachtcharter.</b> additional deposit 1500 EUR, order in advance due to limited quantity of equipment - Payable at the base                           | Yes        | per week     | <b>990,00 €</b>   |
| <b>Stand up paddle (SUP)</b> (Payable at the base)<br><b>Season: 2024 - Angelina Yachtcharter.</b> *additional deposit 250 EUR, order in advance due to limited quantity of equipment - Payable at the base            | Yes        | per week     | <b>80,00 €</b>    |
| <b>Towels</b> (Payable at the base)<br><b>Season: 2024 - Angelina Yachtcharter.</b> Payable at the base                                                                                                                | Yes        | per set      | <b>12,00 €</b>    |
| <b>Beach towel</b> (Payable at the base)<br><b>Season: 2025 - Angelina Yachtcharter.</b> Payable at the base                                                                                                           | Yes        | per piece    | <b>12,00 €</b>    |

|                                                                                                                                                                                  |     |             |                   |
|----------------------------------------------------------------------------------------------------------------------------------------------------------------------------------|-----|-------------|-------------------|
| <b>e-SUP</b> (Payable at the base)                                                                                                                                               | Yes | per week    | <b>250,00 €</b>   |
| <b>Season: 2025 - Angelina Yachtcharter.</b> SipaBoards - Allrounder; + additional deposit 1500 EUR, order in advance due to limited quantity of equipment - Payable at the base |     |             |                   |
| <b>eFoil</b> (Payable at the base)                                                                                                                                               | Yes | per week    | <b>1.200,00 €</b> |
| <b>Season: 2025 - Angelina Yachtcharter.</b> + 3000,00 EUR refundable deposit, order in advance due to limited quantity of equipment - Payable at the base                       |     |             |                   |
| <b>Extra bedlinen</b> (Payable at the base)                                                                                                                                      | Yes | per set     | <b>10,00 €</b>    |
| <b>Season: 2025 - Angelina Yachtcharter.</b> Payable at the base                                                                                                                 |     |             |                   |
| <b>Kayak</b> (Payable at the base)                                                                                                                                               | Yes | per week    | <b>120,00 €</b>   |
| <b>Season: 2025 - Angelina Yachtcharter.</b> *additional deposit 250 EUR, order in advance due to limited quantity of equipment - Payable at the base                            |     |             |                   |
| <b>Outboard engine 2,3 HP</b> (Payable at the base)                                                                                                                              | Yes | per booking | <b>0,00 €</b>     |
| <b>Season: 2025 - Angelina Yachtcharter.</b> Special promotion, free of charge - Payable at the base                                                                             |     |             |                   |
| <b>Railing net (Safety net)</b> (Payable at the base)                                                                                                                            | Yes | per booking | <b>100,00 €</b>   |
| <b>Season: 2025 - Angelina Yachtcharter.</b> order in advance due to limited quantity of equipment - Payable at the base                                                         |     |             |                   |
| <b>Seabob</b> (Payable at the base)                                                                                                                                              | Yes | per week    | <b>990,00 €</b>   |
| <b>Season: 2025 - Angelina Yachtcharter.</b> additional deposit 1500 EUR, order in advance due to limited quantity of equipment - Payable at the base                            |     |             |                   |
| <b>Stand up paddle (SUP)</b> (Payable at the base)                                                                                                                               | Yes | per week    | <b>80,00 €</b>    |
| <b>Season: 2025 - Angelina Yachtcharter.</b> *additional deposit 250 EUR, order in advance due to limited quantity of equipment - Payable at the base                            |     |             |                   |
| <b>Towels</b> (Payable at the base)                                                                                                                                              | Yes | per set     | <b>12,00 €</b>    |
| <b>Season: 2025 - Angelina Yachtcharter.</b> Payable at the base                                                                                                                 |     |             |                   |



**WEBSITE**  
www.plujeme.cz



**PHONE**  
+420 720 755 085



**MOBILE**  
+420 777 170 276



**E-MAIL**  
info@plujeme.cz



**PLUJEME RÁDI S.R.O.**  
Dlouhá 730/35, 11000 Praha 1 - Staré Město, Czech Republic

## PRICE AND AVAILABILITY

|                                               |                                               |                                               |                                               |
|-----------------------------------------------|-----------------------------------------------|-----------------------------------------------|-----------------------------------------------|
| 28.09. - 05.10.2024<br>NOT AVAILABLE          | 05.10. - 12.10.2024<br>NOT AVAILABLE          | 12.10. - 19.10.2024<br><b>2.032 €</b> 2.822 € | 19.10. - 26.10.2024<br><b>1.991 €</b> 2.765 € |
| 26.10. - 02.11.2024<br><b>1.991 €</b> 2.765 € | 02.11. - 09.11.2024<br><b>1.991 €</b> 2.765 € | 09.11. - 16.11.2024<br><b>1.991 €</b> 2.765 € | 17.11. - 31.12.2024<br>NOT AVAILABLE          |
| 01.01. - 31.12.2025<br>NOT AVAILABLE          |                                               |                                               |                                               |



### WEBSITE

[www.plujeme.cz](http://www.plujeme.cz)



### E-MAIL

[info@plujeme.cz](mailto:info@plujeme.cz)



### PHONE

+420 720 755 085



### MOBILE

+420 777 170 276



### PLUJEME RÁDI S.R.O.

Dlouhá 730/35, 11000 Praha 1 – Staré Město, Czech Republic