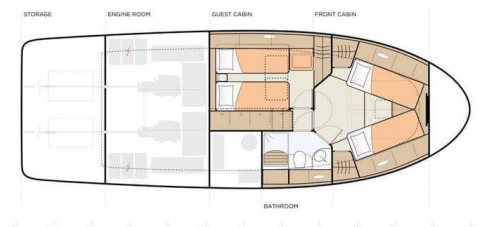


# GREENLINE 40

Lady Elma (2022)

Motor yacht **Greenline 40 Lady Elma**, built in **2022** is anchored in the **Marina Kornati, Biograd, Zadar region, Croatia**. It has **2 cabins**, can accommodate **4 + 2 people** and has **1 toilets**. Bed linen and kitchen equipment are included in the price.



## YACHT SPECIFICATIONS

Yacht Base

**Marina Kornati, Biograd, Croatia**

Yacht ID

**3524**

Brands

**Greenline**

Yacht name

**Lady Elma**

Production year

**2022**

Length

**39 ft**

Cabins

**2**

Berths

**4 + 2**

Max Persons

**6**

WC

**1**

Engine

**2 x 220 HP**

Fuel tank

**700 l**



**WEBSITE**

[www.plujeme.cz](http://www.plujeme.cz)



**PHONE**

+420 720 755 085



**MOBILE**

+420 777 170 276



**E-MAIL**

[info@plujeme.cz](mailto:info@plujeme.cz)



**PLUJEME RÁDI S.R.O.**

Dlouhá 730/35, 11000 Praha 1 – Staré Město, Czech Republic

## STANDARD YACHT EQUIPMENT

Comfort	<b>Cockpit cushions, Sundeck cushions</b>
Deck	<b>Anchor with chain, Bathing platform, Cockpit table, Cockpit/stern, outside shower, Dinghy, Electric anchor windlass, Fenders, Main anchor, Main Deck Compass, Mooring ropes , Sea/Storm drogue anchor, Sun roof, Swimming ladder, Teak cockpit, Teak seats in cockpit</b>
Entertainment	<b>Audio pack, Bluetooth player, LCD TV, Outdoor speakers, Radio, USB, Bluetooth, Remote control for radio in cockpit, Underwater lights</b>
Galley	<b>Dishwasher, Freezer, Hot water, Induction hot plate, Microwave, Refrigerator</b>
Interior	<b>Ambiental lighting, Electric toilet</b>
Navigation	<b>Autopilot, Bow thruster, GPS chart plotter, Hand bearing compass, Harbour guides, Hydraulic flaps, Navigation (Nautical) charts and nautical guide , Stern thruster</b>
Safety	<b>Black Water Tank, Fire extinguisher , First aid kit , Fog horn, Life jackets, Set of tools , Signal rockets and torches , Torch</b>
Yacht electrics	<b>12V Socket, 230 volt socket, Air Conditioning, Batteries, Electricity 230VAC, Heating, Inverter, Shore connection 220 V, Solar panels</b>



**WEBSITE**

[www.plujeme.cz](http://www.plujeme.cz)



**PHONE**

+420 720 755 085



**MOBILE**

+420 777 170 276



**E-MAIL**

[info@plujeme.cz](mailto:info@plujeme.cz)



**PLUJEME RÁDI S.R.O.**

Dlouhá 730/35, 11000 Praha 1 – Staré Město, Czech Republic

## SERVICES

SELECTED SERVICES	OBLIGATORY	PAYMENT TYPE	PRICE
<b>Base costs</b> (Payable at the base) <b>Season: 2025.</b> Check in, check out, Final cleaning, Diver at the check out, Gas, bed linen per person on crew list	Yes	per booking	<b>260,00 €</b>
<b>Deposit insurance</b> (Payable at the base) <b>Season: 2025.</b> The non-refundable deposit can be purchased on-site at a cost of ca. 12% of the deposit for the first and second week. For charters lasting three or more weeks, a new deposit insurance policy must be purchased. Please note that the deposit insurance does not cover clogged toilets, waste tanks, or missing fuel. Therefore, a refundable part of the deposit is mandatory: 1000 EUR (payable in cash or by credit card).	No	per booking	<b>360,00 €</b>
<b>Overnight on board</b> (Payable at the base) <b>Season: 2025.</b> depending on availability	No	per booking	<b>200,00 €</b>
<b>Pet on board</b> (Payable at the base) <b>Season: 2025.</b>	No	per booking	<b>150,00 €</b>
<b>Priority check in</b> (Payable now) <b>Season: 2025.</b> check in between 13:00 - 14:00h. Limited offer, max 5 boats per Saturday	No	per booking	<b>150,00 €</b>
<b>Skipper</b> (Payable at the base) <b>Season: 2025.</b>	No	per day + food	<b>200,00 €</b>



WEBSITE

[www.plujeme.cz](http://www.plujeme.cz)



PHONE

+420 720 755 085



MOBILE

+420 777 170 276



E-MAIL

[info@plujeme.cz](mailto:info@plujeme.cz)



PLUJEME RÁDI S.R.O.

Dlouhá 730/35, 11000 Praha 1 – Staré Město, Czech Republic

## ADDITIONAL EXTRAS

EXTRA	OBLIGATORY	PAYMENT TYPE	PRICE
<b>Automatic Inflatable Life Jacket</b> <i>(Payable at the base)</i> <b>Season: 2025.</b> <i>Payable at the base</i>	No	per week/ person	<b>15,00 €</b>
<b>Extra bedlinen</b> <i>(Payable at the base)</i> <b>Season: 2025.</b> <i>Payable at the base</i>	No	per cabin	<b>12,00 €</b>
<b>Outboard engine</b> <i>(Payable at the base)</i> <b>Season: 2025.</b> <i>+fuel (5L) - Payable at the base</i>	No	per week	<b>80,00 €</b>
<b>Stand up paddle (SUP)</b> <i>(Payable at the base)</i> <b>Season: 2025.</b> <i>Payable at the base</i>	No	per week	<b>80,00 €</b>
<b>Towels</b> <i>(Payable at the base)</i> <b>Season: 2025.</b> <i>(2 towels size 50 x 100, 1 towel size 70 x 140 / per person) - Payable at the base</i>	No	per set	<b>8,00 €</b>

**WEBSITE**[www.plujeme.cz](http://www.plujeme.cz)**E-MAIL**[info@plujeme.cz](mailto:info@plujeme.cz)**PHONE**

+420 720 755 085

**MOBILE**

+420 777 170 276

**PLUJEME RÁDI S.R.O.**

Dlouhá 730/35, 11000 Praha 1 – Staré Město, Czech Republic

## PRICE AND AVAILABILITY

19.04. - 26.04.2025 2.040 € 3.400 €	26.04. - 03.05.2025 2.040 € 3.400 €	03.05. - 10.05.2025 2.040 € 3.400 €	10.05. - 17.05.2025 2.280 € 3.800 €
17.05. - 24.05.2025 2.400 € 4.000 €	24.05. - 31.05.2025 3.080 € 4.400 €	31.05. - 07.06.2025 NOT AVAILABLE	07.06. - 14.06.2025 3.224 € 5.200 €
14.06. - 21.06.2025 NOT AVAILABLE	21.06. - 28.06.2025 NOT AVAILABLE	28.06. - 05.07.2025 NOT AVAILABLE	05.07. - 12.07.2025 4.080 € 6.000 €
12.07. - 19.07.2025 NOT AVAILABLE	19.07. - 26.07.2025 4.154 € 6.200 €	26.07. - 02.08.2025 NOT AVAILABLE	02.08. - 09.08.2025 NOT AVAILABLE
09.08. - 16.08.2025 NOT AVAILABLE	16.08. - 23.08.2025 NOT AVAILABLE	23.08. - 30.08.2025 NOT AVAILABLE	30.08. - 06.09.2025 3.484 € 5.200 €
06.09. - 13.09.2025 NOT AVAILABLE	13.09. - 20.09.2025 2.948 € 4.400 €	20.09. - 27.09.2025 2.622 € 3.800 €	27.09. - 04.10.2025 2.278 € 3.400 €
04.10. - 11.10.2025 2.210 € 3.400 €	11.10. - 18.10.2025 2.210 € 3.400 €	18.10. - 25.10.2025 2.210 € 3.400 €	26.10. - 31.12.2025 NOT AVAILABLE



**WEBSITE**  
[www.plujeme.cz](http://www.plujeme.cz)



**E-MAIL**  
[info@plujeme.cz](mailto:info@plujeme.cz)



**PHONE**  
+420 720 755 085



**MOBILE**  
+420 777 170 276



**PLUJEME RÁDI S.R.O.**  
Dlouhá 730/35, 11000 Praha 1 – Staré Město, Czech Republic