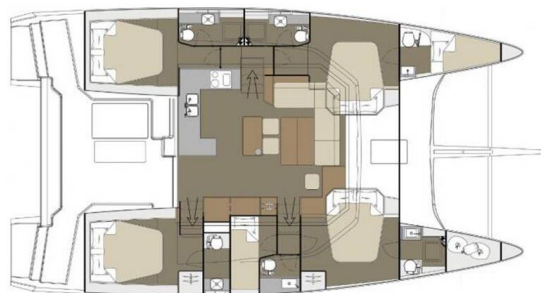


DUFOUR 48 CATAMARAN

Yam (2020)

Catamaran Dufour 48 Catamaran Yam, built in 2020 is anchored in the **Dubrovnik, Komolac, ACI Marina Dubrovnik, Dubrovnik region, Croatia**. It has **5 + 1 cabins**, can accommodate **10 + 1 people** and has **5 + 1 toilets**. Bed linen and kitchen equipment are included in the price.



YACHT SPECIFICATIONS

Yacht Base

**Dubrovnik, Komolac, ACI Marina
Dubrovnik, Croatia**

Yacht ID

2583

Brands

Dufour

Yacht name

Yam

Production year

2020

Length

48 ft

Cabins

5 + 1

Berths

10 + 1

Max Persons

12

WC

5 + 1

Engine

2 x 60 HP

Fuel tank

750 l



WEBSITE

www.plujeme.cz



PHONE

+420 720 755 085



MOBILE

+420 777 170 276



E-MAIL

info@plujeme.cz



PLUJEME RÁDI S.R.O.

Dlouhá 730/35, 11000 Praha 1 – Staré Město, Czech Republic

STANDARD YACHT EQUIPMENT

Comfort	Leather salon cushions, Sundeck cushions, Towels
Deck	Cockpit fridge, Dinghy with outboard engine, Grill/Barbecue/Plancha, Hydraulic gangway, Teak cockpit, Teak deck, Ultra Anchor
Entertainment	FUSION sound system, Underwater lights, Wireless Internet Router
Galley	Dishwasher, Freezer, Ice maker, Microwave, NESPRESSO coffee machine, Refrigerator
Interior	Electric toilet, LED lights
Navigation	AIS, Autopilot, Complete navigation equipment, GPS chart plotter, Navigation (Nautical) charts and nautical guide , Navigation set, Radar
Safety	Black Water Tank, VHF radio
Sails	Electric winch, Lazy bag, Self tacking jib
Yacht electrics	Air Conditioning, Converter 220V/12V, Generator, Heating, Inverter



WEBSITE

www.plujeme.cz



E-MAIL

info@plujeme.cz



PHONE

+420 720 755 085



MOBILE

+420 777 170 276



PLUJEME RÁDI S.R.O.

Dlouhá 730/35, 11000 Praha 1 – Staré Město, Czech Republic

SERVICES

SELECTED SERVICES	OBLIGATORY	PAYMENT TYPE	PRICE
Transit log (Payable at the base) Season: 2024.	Yes	per booking	400,00 €
Transit log (Payable at the base) Season: 2025.	Yes	per booking	400,00 €
Cook (Payable at the base) Season: 2024.	Yes	per day	250,00 €
Hostess (Payable at the base) Season: 2024.	Yes	per day	150,00 €
One way fee (Payable at the base) Season: 2024. + port fees, on request	Yes	per booking	900,00 €
Skipper (Payable at the base) Season: 2024.	Yes	per day	200,00 €
Cook (Payable at the base) Season: 2025.	Yes	per day	250,00 €
Hostess (Payable at the base) Season: 2025.	Yes	per day	150,00 €
One way fee (Payable at the base) Season: 2025. + port fees, on request	Yes	per booking	900,00 €
Skipper (Payable at the base) Season: 2025.	Yes	per day	200,00 €



WEBSITE
www.plujeme.cz



PHONE
+420 720 755 085



MOBILE
+420 777 170 276



E-MAIL
info@plujeme.cz



PLUJEME RÁDI S.R.O.
Dlouhá 730/35, 11000 Praha 1 – Staré Město, Czech Republic

ADDITIONAL EXTRAS

EXTRA	OBLIGATORY	PAYMENT TYPE	PRICE
Code Zero (Payable at the base) Season: 2024. Payable at the base	Yes	per week	300,00 €
Gennaker (Payable at the base) Season: 2024. Payable at the base	Yes	per week	300,00 €
Kayak single (Payable at the base) Season: 2024. Payable at the base	Yes	per week	150,00 €
Kayak tandem (Payable at the base) Season: 2024. Payable at the base	Yes	per week	200,00 €
RIB (Payable at the base) Season: 2024. RIB 3,3m (HIGFIELD) + 30HP engine - Payable at the base	Yes	per week	500,00 €
RIB (Payable at the base) Season: 2024. RIB 4.6 (HIGFIELD) + 50HP engine - Payable at the base	Yes	per week	1.000,00 €
RIB (Payable at the base) Season: 2024. RIB 5.6m (HIGFIELD) + 100HP engine - Payable at the base	Yes	per week	1.350,00 €
RIB (Payable at the base) Season: 2024. RIB 5.6m (HIGFIELD) + 115HP engine - Payable at the base	Yes	per week	1.350,00 €
Stand up paddle (SUP) (Payable at the base) Season: 2024. Standard SUP - Payable at the base	Yes	per booking	100,00 €
Stand up paddle (SUP) (Payable at the base) Season: 2024. Mistral - Payable at the base	Yes	per week	150,00 €
Stand up paddle (SUP) (Payable at the base) Season: 2024. Big SUP for 10 pax (Mistral 18 feet) - Payable at the base	Yes	per week	300,00 €
Code Zero (Payable at the base) Season: 2025. Payable at the base	Yes	per week	300,00 €
Gennaker (Payable at the base) Season: 2025. Payable at the base	Yes	per week	300,00 €

Kayak single (Payable at the base) Season: 2025. Payable at the base	Yes	per week	150,00 €
Kayak tandem (Payable at the base) Season: 2025. Payable at the base	Yes	per week	200,00 €
RIB (Payable at the base) Season: 2025. RIB 3,3m (HIGHFIELD) + 30HP engine - Payable at the base	Yes	per week	500,00 €
RIB (Payable at the base) Season: 2025. RIB 4.6 (HIGHFIELD) + 50HP engine - Payable at the base	Yes	per week	1.000,00 €
RIB (Payable at the base) Season: 2025. RIB 5.6m (HIGHFIELD) + 115HP engine - Payable at the base	Yes	per week	1.350,00 €
RIB (Payable at the base) Season: 2025. RIB 5.6m (HIGHFIELD) + 100HP engine - Payable at the base	Yes	per week	1.350,00 €
Stand up paddle (SUP) (Payable at the base) Season: 2025. Standard SUP - Payable at the base	Yes	per booking	100,00 €
Stand up paddle (SUP) (Payable at the base) Season: 2025. Mistral - Payable at the base	Yes	per week	150,00 €
Stand up paddle (SUP) (Payable at the base) Season: 2025. Big SUP for 10 pax (Mistral 18 feet) - Payable at the base	Yes	per week	300,00 €



WEBSITE

www.plujeme.cz



E-MAIL

info@plujeme.cz



PHONE

+420 720 755 085



MOBILE

+420 777 170 276



PLUJEME RÁDI S.R.O.

Dlouhá 730/35, 11000 Praha 1 – Staré Město, Czech Republic

PRICE AND AVAILABILITY

21.09. - 28.09.2024 NOT AVAILABLE	28.09. - 05.10.2024 NOT AVAILABLE	05.10. - 12.10.2024 NOT AVAILABLE	12.10. - 19.10.2024 3.829 € 5.890 €
19.10. - 26.10.2024 3.829 € 5.890 €	26.10. - 02.11.2024 3.829 € 5.890 €	02.11. - 09.11.2024 3.829 € 5.890 €	09.11. - 16.11.2024 3.829 € 5.890 €
16.11. - 23.11.2024 3.829 € 5.890 €	23.11. - 30.11.2024 3.829 € 5.890 €	30.11. - 07.12.2024 3.829 € 5.890 €	07.12. - 14.12.2024 3.829 € 5.890 €
14.12. - 21.12.2024 3.829 € 5.890 €	21.12. - 28.12.2024 3.829 € 5.890 €	04.01. - 11.01.2025 5.890 €	11.01. - 18.01.2025 5.890 €
18.01. - 25.01.2025 5.890 €	25.01. - 01.02.2025 5.890 €	01.02. - 08.02.2025 5.890 €	08.02. - 15.02.2025 5.890 €
15.02. - 22.02.2025 5.890 €	22.02. - 01.03.2025 5.890 €	01.03. - 08.03.2025 5.890 €	08.03. - 15.03.2025 5.890 €
15.03. - 22.03.2025 5.890 €	22.03. - 29.03.2025 5.890 €	29.03. - 05.04.2025 5.301 € 5.890 €	05.04. - 12.04.2025 5.301 € 5.890 €
12.04. - 19.04.2025 5.301 € 5.890 €	19.04. - 26.04.2025 5.301 € 5.890 €	26.04. - 03.05.2025 6.413 € 7.125 €	



WEBSITE
www.plujeme.cz



E-MAIL
info@plujeme.cz



PHONE
+420 720 755 085



MOBILE
+420 777 170 276



PLUJEME RÁDI S.R.O.
Dlouhá 730/35, 11000 Praha 1 – Staré Město, Czech Republic

PRICE AND AVAILABILITY

03.05. - 10.05.2025 6.413 € 7.125 €	10.05. - 17.05.2025 8.379 € 9.310 €	17.05. - 24.05.2025 8.379 € 9.310 €	24.05. - 31.05.2025 8.379 € 9.310 €
31.05. - 07.06.2025 10.431 € 11.590 €	07.06. - 14.06.2025 10.431 € 11.590 €	14.06. - 21.06.2025 10.431 € 11.590 €	21.06. - 28.06.2025 12.312 € 13.680 €
28.06. - 05.07.2025 14.108 € 15.675 €	05.07. - 12.07.2025 14.108 € 15.675 €	12.07. - 19.07.2025 14.108 € 15.675 €	19.07. - 26.07.2025 14.108 € 15.675 €
26.07. - 02.08.2025 14.108 € 15.675 €	02.08. - 09.08.2025 14.108 € 15.675 €	09.08. - 16.08.2025 12.398 € 13.775 €	16.08. - 23.08.2025 12.398 € 13.775 €
23.08. - 30.08.2025 10.431 € 11.590 €	30.08. - 06.09.2025 10.431 € 11.590 €	06.09. - 13.09.2025 9.302 € 10.335 €	13.09. - 20.09.2025 8.379 € 9.310 €
20.09. - 27.09.2025 6.413 € 7.125 €	27.09. - 04.10.2025 5.301 € 5.890 €	04.10. - 11.10.2025 5.301 € 5.890 €	11.10. - 18.10.2025 5.301 € 5.890 €
18.10. - 25.10.2025 5.301 € 5.890 €	25.10. - 01.11.2025 5.301 € 5.890 €	01.11. - 08.11.2025 5.301 € 5.890 €	08.11. - 15.11.2025 5.301 € 5.890 €
15.11. - 22.11.2025 5.301 € 5.890 €	22.11. - 29.11.2025 5.301 € 5.890 €	29.11. - 06.12.2025 5.301 € 5.890 €	06.12. - 13.12.2025 5.301 € 5.890 €
13.12. - 20.12.2025 5.301 € 5.890 €	20.12. - 27.12.2025 5.301 € 5.890 €		



WEBSITE

www.plujeme.cz



E-MAIL

info@plujeme.cz



PHONE

+420 720 755 085



MOBILE

+420 777 170 276



PLUJEME RÁDI S.R.O.

Dlouhá 730/35, 11000 Praha 1 – Staré Město, Czech Republic