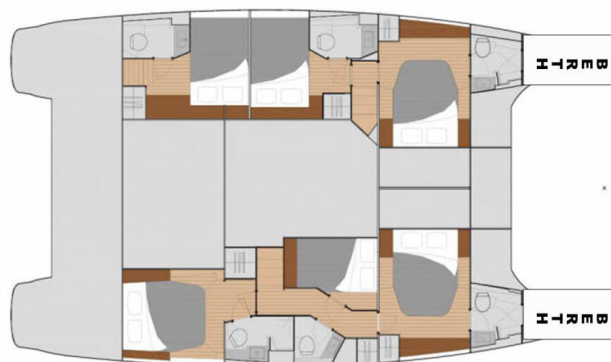


FOUNTAINÉ PAJOT SABA 50

Good Vibrations (2020)

Catamaran Fountaine Pajot Saba 50 Good Vibrations, built in 2020 is anchored in the BVI, Tortola, Nanny Cay Marina, British Virgin Islands, British Virgin Islands. It has 6 + 2 cabins, can accommodate 12 + 2 people and has 6 toilets. Bed linen and kitchen equipment are included in the price.



YACHT SPECIFICATIONS

Yacht Base

**BVI, Tortola, Nanny Cay Marina,
British Virgin Islands**

Yacht ID

1778

Brands

Fountaine Pajot

Yacht name

Good Vibrations

Production year

2020

Length

48 ft

Cabins

6 + 2

Berths

12 + 2

Max Persons

12

WC

6

Engine

2 x 75 HP

Fuel tank

940 l



WEBSITE

www.plujeme.cz



PHONE

+420 720 755 085



MOBILE

+420 777 170 276



E-MAIL

info@plujeme.cz



PLUJEME RÁDI S.R.O.

Dlouhá 730/35, 11000 Praha 1 – Staré Město, Czech Republic

STANDARD YACHT EQUIPMENT

Additional	Flag
Comfort	Cockpit cushions, Outside cushions, Towels
Deck	Anchor Delta, Anchor with chain, Bathing platform, Bimini top, Bosun's chair (Safe seat) (boatswain's chair), Cockpit table, Cockpit/stern, outside shower, Deck brush, Dinghy with outboard engine, Electric anchor windlass, Fenders, Foredeck sunbathing area, Fuel funnel, Gangway, Grill/Barbecue/Plancha, Jerry cans for fuel, Mooring ropes , Rail openings both sides, Round/globular fender, Sponge, Spring cleats, Swimming ladder, Teak cockpit, Teak table
Entertainment	FUSION sound system, Indoor speakers, Mask and snorkel, Outdoor speakers, Radio CD player, Stand up paddle (SUP) - FREE
Galley	Blender, Electrical filter coffee maker, Gas bottles, Gas cookers, Ice maker, Kitchen utensils (Galley equipment, cutlery), Microwave, Moka pot, Refrigerator, Toaster
Interior	Clothes hangers, Electric fans in cabins
Navigation	Autopilot, Binoculars, Compass, GPS chart plotter, Nautical charts, Navigation (Nautical) charts and nautical guide , Navigation set, Navigation/position Lights, Radar reflector, Tridata, Wind instrument/Anemometer, Windex
Safety	Black Water Tank, Distress flare box, Fire extinguisher , First aid kit , Fog horn, Horseshoe lifebuoy, Inflatable life raft, Life belts (Safety harness), Life jacket (children), Life jackets, Set of tools , Signal flags, Signal rockets and torches , VHF radio , Wire (shroud) cutter
Sails	Electric winch, Lazy bag, Lazy jacks, Winch
Yacht electrics	Air Conditioning, Batteries, Battery charger , Bilge pump - Electric, DSC station, Generator, Heating, Inverter, Service batteries, Solar panels, Start battery, Water heater, Watermaker - desalinator



WEBSITE

www.plujeme.cz



PHONE

+420 720 755 085



MOBILE

+420 777 170 276



E-MAIL

info@plujeme.cz



PLUJEME RÁDI S.R.O.

Dlouhá 730/35, 11000 Praha 1 – Staré Město, Czech Republic

SERVICES

SELECTED SERVICES	OBLIGATORY	PAYMENT TYPE	PRICE
Cruising tax (Payable now) Season: 2025. BVI: Cruising tax payable in advance: 4 USD per person / day (Price will be adjusted when the option is confirmed)	Yes	per guest/day	3,48 €
Navigare Carefree (Payable now) Season: 2025. *** To be added upon client's price - OBLIGATORY - CAT from 46 ft - BVI - Includes damage waiver insurance/full coverage* - NEW!, welcome package, final cleaning, bed sheets & towels, dinghy, outboard engine & fuel, propane gas, full water tanks, snorkelling equipment, National parks permits and VISAR . Beach towels are provided 1 per person for the charter. Yacht Fuel is not included - the fuel tank will be full when your charter starts and you are responsible for topping off the fuel tank at the end of your charter. ***** CRUISING TAX is NOT INCLUDED.	Yes	per booking	840,00 €
APA (Advance Provisioning Allowance) (Payable now) Season: 2025. The APA amount is used to cover all expenses during the course of the charter such as fuel, food, beverages, mooring fee and other expenses not included in the Charter Fee. The captain of the yacht is responsible for accounting for all APA expenses during the charter, and the breakdown will be presented to the client at the end of the charter. (AVAILABLE ONLY WHEN BOOKED WITH NAVIGARE SKIPPER AND HOSTESS OR COOK)	No	per week	4.000,00 €
Checkout Skipper (Payable now) Season: 2025. A check-out skipper (COS) is a professional captain that boards with you on Day 1, and is dropped off late afternoon the same day. A COS may be requested by you or may be required by Navigare after review of your sailing resume.	No	per booking	370,00 €
Cook (Payable now) Season: 2025. Cook requires standard cabin with access to a toilet and shower + food. A gratuity of 15-20% of the crew fee is customary for excellent service. Cooking breakfast, lunch, dinners, and supplies, keeping the kitchen clean (not the rest of the boat, not the cabins). ***NOTE: Cook details will be available 3 days before the charter.	No	per day + food	240,00 €
Extra cleaning (Payable now) Season: 2025. Cleaning and new bed linen and towels	No	per booking	350,00 €

Sailing Instructor (Payable at the base) Season: 2025. Sailing instructor BVI	No	per day + food	350,00 €
Skipper (Payable now) Season: 2025. Skipper requires standard cabin with access to a toilet and shower + food (not peak skipper cabin). A gratuity of 15-20% of the crew fee is customary for excellent service ***NOTE: Skipper details will be available 3 days before the charter.	No	per day + food	295,00 €
Skipper (Payable now) Season: 2025. Skipper using crew-cabin (peak cabin) with access to a toilet and shower*** Gratuity A gratuity of 15-20% of the crew fee is customary for excellent service ***NOTE: Skipper details will be available 3 days before the charter	No	per day + food	345,00 €
Sleep over before check in (Payable now) Season: 2025. Sleep over on a day before the check-in: Sleep over from 5PM on a day before the check-in date and time stated in the contract: 65% of the daily rate. (Price will be adjusted when the option is confirmed)	No	per booking	1.000,00 €
WIFI package (Payable now) Season: 2025. Unlimited Wifi / BVI / BAH / CAR	No	per booking	130,44 €



WEBSITE
www.plujeme.cz



PHONE
+420 720 755 085



MOBILE
+420 777 170 276



E-MAIL
info@plujeme.cz



PLUJEME RÁDI S.R.O.
Dlouhá 730/35, 11000 Praha 1 – Staré Město, Czech Republic

ADDITIONAL EXTRAS

EXTRA	OBLIGATORY	PAYMENT TYPE	PRICE
Railing net (Safety net) <i>(Payable now)</i> Season: 2025. <i>mounting not included - Payable now</i>	No	per booking	155,00 €
Stand up paddle (SUP) <i>(Payable now)</i> Season: 2025. <i>Payable now</i>	No	per day	20,00 €

**WEBSITE**

www.plujeme.cz

**E-MAIL**

info@plujeme.cz

**PHONE**

+420 720 755 085

**MOBILE**

+420 777 170 276

**PLUJEME RÁDI S.R.O.**

Dlouhá 730/35, 11000 Praha 1 – Staré Město, Czech Republic

PRICE AND AVAILABILITY

02.12. - 18.12.2024 NOT AVAILABLE	21.12. - 31.12.2024 NOT AVAILABLE	31.12. - 07.01.2025 NOT AVAILABLE	10.01. - 19.01.2025 NOT AVAILABLE
29.01. - 08.02.2025 NOT AVAILABLE	08.02. - 15.02.2025 11.228 € 16.040 €	15.02. - 22.02.2025 ON OPTION	22.02. - 01.03.2025 ON OPTION
07.03. - 16.03.2025 NOT AVAILABLE	22.03. - 29.03.2025 10.666 € 15.237 €	01.04. - 09.04.2025 NOT AVAILABLE	10.04. - 21.04.2025 NOT AVAILABLE
26.04. - 03.05.2025 10.962 € 15.660 €	03.05. - 10.05.2025 10.962 € 15.660 €	10.05. - 17.05.2025 9.681 € 13.830 €	17.05. - 24.05.2025 9.681 € 13.830 €
24.05. - 31.05.2025 9.681 € 13.830 €	31.05. - 07.06.2025 9.681 € 13.830 €	07.06. - 14.06.2025 ON OPTION	14.06. - 21.06.2025 ON OPTION
21.06. - 28.06.2025 7.133 € 10.190 €	28.06. - 05.07.2025 7.133 € 10.190 €		



WEBSITE

www.plujeme.cz



E-MAIL

info@plujeme.cz



PHONE

+420 720 755 085



MOBILE

+420 777 170 276



PLUJEME RÁDI S.R.O.

Dlouhá 730/35, 11000 Praha 1 – Staré Město, Czech Republic

PRICE AND AVAILABILITY

11.07. - 15.07.2025

NOT AVAILABLE

23.07. - 28.07.2025

NOT AVAILABLE

31.08. - 01.01.2099

NOT AVAILABLE



WEBSITE

www.plujeme.cz



E-MAIL

info@plujeme.cz



PHONE

+420 720 755 085



MOBILE

+420 777 170 276



PLUJEME RÁDI S.R.O.

Dlouhá 730/35, 11000 Praha 1 – Staré Město, Czech Republic